

UFM 050

Mobile filtration unit



Available in three configurations

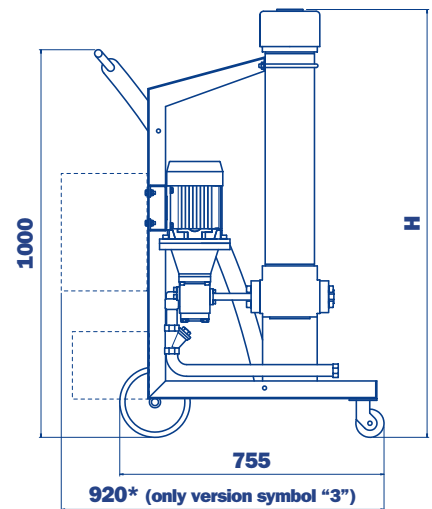
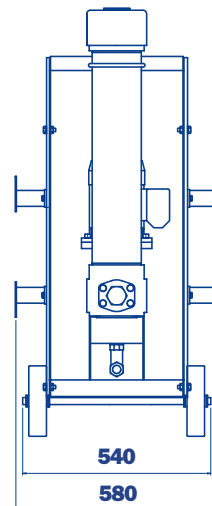
- A configuration with start / stop differential pressure indicator - visual
- B configuration with start / stop automatic motor cut-out from differential pressure indicator - electrical/visual
- C configuration with start / stop phase inverter automatic motor cut-out from differential pressure indicator - electrical/visual
In Line Particle Counter ICM

UFM 050 mobile filtration units suitable for filling and refilling of filtered hydraulic fluids and lubrication tanks.

The filter unit connected to off-line to the tank (recommended maximum volume of 500/750 L.), can be used as a support to the filtration plant on start-up for fast flushing action, either as additional filtration systems with a high incidence of contamination.

Continued use is recommended for the version with three phase electric motor.

Dimensions



UFM 050

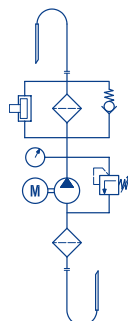
Length filter body
(see ordering information)

Length Filter	H mm
5	1230 Standard
6	1530 Special

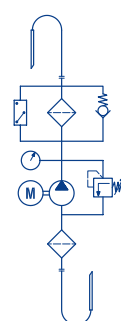
- **Compact size**
- **Continue Operation Pressure 10 bar**
- **Easy to use**
- **Easy maintenance**
- **Reliable**
- **Absolute filtration**
- **In Line Contamination Monitor**

Symbols (see ordering information)

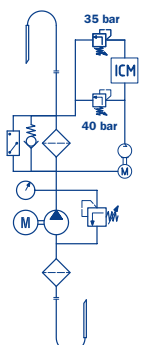
"0"
Symbol



"1"
Symbol



"3"
Symbol



Pump	Gear pump
Electric Motor	1,5 Kw 230 Volt single phase electric motor 1,5 Kw 400/230 Volt three phase electric motor
Flow (l/min)	50 l/min
Max. Operation Pressure	10 bar
Viscosity range	Min. operation 10 cSt Max. operation 300 cSt Max. only for cold start 800 cSt
Suction Filter	Type Y filtration 400 µm
Filtration Rating	1/3/6/10/16/25 µm β>1000 flow through the element Out/In
By-Pass valve	Rating 3,5 bar (no by-pass valve in request)
Fluid Temperature	From -10° to +80° C
Ambient Temperature	From -20° to +45° C
Protection Class	IP 55
Seal	NBR
Fluid Compatibility	Mineral Oil - Other on request
Suction hose - with lance	1 1/4" length 3000 mm - DN35 length 700 mm
Pressure hose - with lance	1" length 3000 mm - DN30 length 700 mm
Weight	70 kg.
Equipment	<ul style="list-style-type: none"> Differential Clogging indicator - Visual Differential Clogging indicator - Electrical/Visual In line Particle Counter ICM + Differential Clogging indicator - Electrical/Visual

Filter element length 5 Standard

Inorganic microfibre element

CU 400 5 A01 A N P01	1 µm absolute
CU 400 5 A03 A N P01	3 µm absolute
CU 400 5 A06 A N P01	6 µm absolute
CU 400 5 A10 A N P01	10 µm absolute
CU 400 5 A16 A N P01	16 µm absolute
CU 400 5 A25 A N P01	25 µm absolute

Wire mesh element

CU 400 5 M25 A N P01	25 µm
CU 400 5 M60 A N P01	60 µm

Filter element length 6 Special

Inorganic microfibre element

CU 400 6 A01 A N P01	1 µm absolute
CU 400 6 A03 A N P01	3 µm absolute
CU 400 6 A06 A N P01	6 µm absolute
CU 400 6 A10 A N P01	10 µm absolute
CU 400 6 A16 A N P01	16 µm absolute
CU 400 6 A25 A N P01	25 µm absolute

Wire mesh element

CU 400 6 M25 A N P01	25 µm
CU 400 6 M60 A N P01	60 µm

Ordering information

UFM

Example: UFM

1	2	3	4	5	6	7
<input type="text" value="050"/>	<input type="text" value="T"/>	<input type="text" value="A"/>	<input type="text" value="2"/>	<input type="text" value="E"/>	<input type="text" value="5"/>	<input type="text" value="P01"/>
050	T	A	2	E	5	P01

1 - Flow

50 l/min

2 - Electric motor

Single phase 220 V
 Three phase 380 V

3 - Seals

NBR

4 - Automatic motor cut-out from differential pressure indicator

Without
 With
 Automatic motor cut-out from differential pressure indicator
Phase inverter
ICM Contamination Monitor
Only with electric motor three phase

5 - Filter elements

Without element
 1 µm absolute
 3 µm absolute
 6 µm absolute
 10 µm absolute
 16 µm absolute
 25 µm absolute
 25 µm wire mesh
 60 µm wire mesh

6 - Length filter body

Standard
 Special

7 - Option

Standard MP Filtri