

GRF 015

Mobile filtration unit



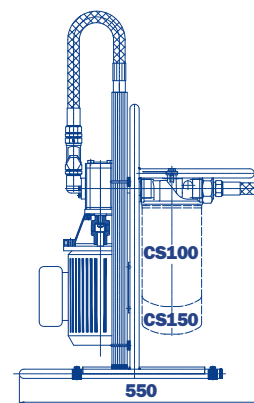
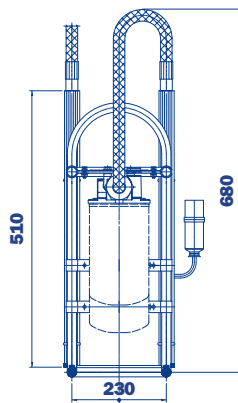
The GRF 015 is a portable oil transfer/filtration unit, specifically designed for both filling/transferring hydraulic oils from containers to the hydraulic tank as well as filtering and cleaning hydraulic systems.

The unit utilises Spin-On standard filters elements, available in two lengths, thus increasing the dirt holding capacity and lowering pressure drop of the unit.

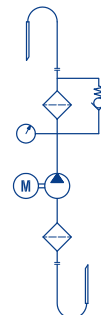
The unit has the flexibility in being able to offer a wide range of medias and micro ratings to suit any application.

The unit is very compact and lightweight.

- **Handle size**
- **Light**
- **Easy to use**
- **Easy maintenance**
- **Reliable**
- **Absolute filtration**



Symbol



Technical data

Pump	Gear pump
Electric Motor	0,18 Kw 230 Volt single phase electric motor
Flow (l/min)	15 l/min
Max. Operation Pressure	5 bar
Viscosity range	Min. operation 10 cSt Max. operation 200 cSt Max. only for cold start 400 cSt
Suction Filter	Type Y filtration 300 µm
Filtration Rating	1/3/6/10/25 µm β>1000 flow through the element In/Out
By-Pass valve	Rating 2,5 bar
Fluid Temperature	From -10° to +80 °C
Ambient Temperature	From -20° to +45 °C
Protection Class	IP 55
Seal	NBR
Fluid Compatibility	Mineral Oil - Other on request
Suction hose	3/4" length 2500 mm - DN18 length 400 mm
Pressure hose	3/4" length 2500 mm - DN18 length 400 mm
Weight	14,8 kg.
Equipment	Visual clogging indicator (gauge)

Spare parts

Filter element - Standard length

Inorganic microfibre element

CS 100 A01 A P01	1 µm absolute
CS 100 A03 A P01	3 µm absolute
CS 100 A06 A P01	6 µm absolute
CS 100 A10 A P01	10 µm absolute
CS 100 A25 A P01	25 µm absolute

Wire mesh element

CS 100 M25 A P01	25 µm
CS 100 M60 A P01	60 µm

Filter element - Extended length

Inorganic microfibre element

CS 150 A01 A P01	1 µm absolute
CS 150 A03 A P01	3 µm absolute
CS 150 A06 A P01	6 µm absolute
CS 150 A10 A P01	10 µm absolute
CS 150 A25 A P01	25 µm absolute

Wire mesh element

CS 150 M25 A P01	25 µm
CS 150 M60 A P01	60 µm

Ordering information

GRF 015 1 A M M 1 M 1

- **Mobile filtration unit without filter element**
- **Filtration elements should be ordered separately**